

Lille - Paris

IESEG School of Management

Established in Lille in 1964 and member of the French «Conférence des Grandes Écoles», of AACSB (Association to Advance Collegiate Schools of Business) and EFMD (European Foundation for Management Development), IESEG is now one of the top 10 business schools in France. The school's mission is to train and prepare future executives and leaders in the corporate world both nationally and internationally, create actors of change in a professional environment that is constantly changing and improving. With 169 partner universities located in 47 countries, IESEG strives to create a truly international learning environment for its students, faculty and staff.

IESEG offers a 3-year Bachelor of Business Administration covering the fundamentals of management followed by a 2-year Master of Science (MSc) programme in which the students deepen their management knowledge and choose a specialisation: Marketing, Finance, Organizational Behaviour and Human Resource Management, Economics and Business Administration, Management of Information Systems, Operations Management, Audit Control, International Negotiation and General Management. Our rigorous and demanding 5-year programme trains future managers in all the functional areas of management, through both academic study and experience in the workplace.



LILLE Campus

Address: 3, rue de la Digue
 Zip Code / City: 59000 Lille
 Country: FRANCE
 Tel: +33 (0) 320.545.892
 Fax: +33 (0) 320.574.855
 Website: www.ieseg.fr ; www.ieseginternational.com

Head of the Institution: Dr. Jean-Philippe Ammeux

Situated in Lille, France's youngest and friendliest metropolis and the gateway to north-western Europe, IESEG School of Management is easily reached from Brussels, London and Paris: fast trains put Lille at 35 minutes from downtown Brussels, 1 hour 20 from London and 50 minutes from Paris Charles de Gaulle Airport. Landing at Charles De Gaulle airport and taking the TGV fast train is the most convenient way to get to Lille.

The school has its own facilities at the heart of the beautiful Catholic University campus, next to the peaceful Jardin Vauban and within easy walking distance from student residences and the commercial and cultural centre of Lille. IESEG School of Management was founded in 1964 within the Lille Catholic University, France's largest private university, to train future business executives to Master's level in economics and the full range of management disciplines. On 10,000 m² the campus has 20 lecture halls, 23 classrooms, 7 multimedia rooms, 1 trading room, 1 library, 1 cafeteria and rooms available for school associations.



PARIS Campus

Address: Socle de la Grande-Arche, 1, parvis de la Défense
 Zip Code / City: 92044 Paris-La Défense cedex
 Country: FRANCE
 Tel: +33 (0) 155.911.010
 Fax: +33 (0) 147.759.375
 Website: www.ieseg.fr ; www.ieseginternational.com

Please note that the Direction of the International Relations is based in Lille, and applications have to be sent to Lille.

Paris campus opened in 2009 in the heart of the business district of «La Défense» more precisely in the «Grande Arche». Our Bachelor and MSc program are both offered. On the 9000 m² the campus has 16 lecture halls, 13 classrooms, 3 multimedia centres, 1 trading room, 1 library, 1 cafeteria and rooms available for school associations.

As France's capital, Paris is a major source of culture, history, fashion, food, and more. The city's rich cultural and historical base, coupled with its tendency to transform and develop, makes Paris an innovative and dynamic city. This prime location allows the school to reinforce its links with companies and build on its already excellent reputation nationally and internationally (1 500 companies, 150 000 employees). La Défense is itself very important economic area: the campus is close to a big shopping centre, restaurants, snack bars, cinemas, and above a RER station (transportation), 45 minutes from TGV train station Gare du Nord, 45 minutes from Paris CDG airport.

Lille - Paris

CONTACT DETAILS



Head of International Exchange Programmes

Mr Pascal Ameye
p.ameye@ieseg.fr

>> Coordination of international exchange programmes, academic advisor, nominations and applications



Head of International Services

Ms Marta Vazquez
m.vazquez@ieseg.fr

>> Management of international services, academic advisor



International Partner Relations Coordinator

Ms Mathilde Liénard
m.lienard@ieseg.fr

>> brochures, information package



International Services Coordinators
Lille Campus

Coralie Leducq
c.leducq@ieseg.fr

>> General requests, application, administrative formalities, health, residence title, housing subsidy, etc.



International Services Coordinators
Lille Campus

Ms H el ene Guinard
h.guinard@ieseg.fr

>> General requests, housing, administrative formalities, orientation week, health, etc.



International Services Coordinators
Paris Campus

Ms Hanane Elkouari
h.elkouari@ieseg.fr

>> General requests, application, housing, administrative formalities, orientation week, health, residence title, housing subsidy, etc.

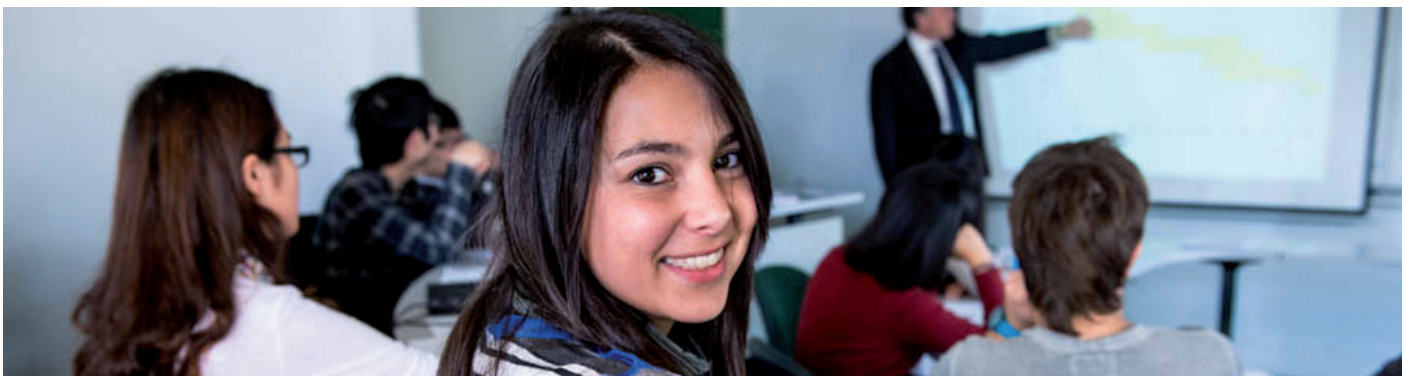
ACADEMIC CALENDAR 2012/2013

Semester 1 (Fall)

Arrival Date: last week of August.
Preferred day: 20th August 2012
Mandatory Orientation week: **August 21st to 25th 2012**
Beginning and end of semester (including examination period): **August 27th to December 22nd 2012**

Semester 2 (Spring)

Arrival Date: 1st week of January.
Preferred day: 7th January 2013
Mandatory Orientation week: **January 8th to 12th 2013**
Beginning and end of semester (including examination period): **January 14th to May 22nd 2013**



Lille - Paris



APPLICATION PROCEDURE FOR BOTH CAMPUSES

Application Procedure: When applying, students will have already chosen which campus they will go to, in agreement with their home university.

Application Deadlines: Semester 1 (August to December) and academic year: **May 31st, 2012**
Semester 2 (January to May): **October 31st, 2012**

Information Materials: Downloadable on our website:
<http://international.ieseg.fr> under «International > Study @ IESEG in exchange»,

ONLINE Application: **You are required to read the “Exchange Programme Information” (current document) and then apply online on <http://application.ieseg.fr/>, choose Echanges Internationaux or Exchange Program, and follow the indicated procedure online.**



Please note that students who do not apply ONLINE will not be enrolled in our programme.

Do not forget to SUBMIT your application at the end of the online process.

No letter of acceptance will be issued as long as the students do not apply online and send the application and required documents.

Required Documents:

- IESEG online application form complete and printed
- Signature from your home university on your application
- Learning agreement (course list)
- Original transcripts of grades
- Statement of interest (letter indicating reasons for applying)
- 1 electronic passport photo** (to upload in your online application: it will be used for your IESEG student card and student yearbook): clear background, head and shoulders only, jpg, jpeg, png or gif format. **NO holiday or group photo!**

You should also bring with you: a birth certificate in French (please keep it with you for the registration to French health insurance and for housing subsidy – for non-European students). You may get in touch with the French Consulate or Alliance Française for advice on translation in French.

Application Mailing Address: IESEG School of Management
Mr Pascal AMEYE
Head of International Exchange Programmes
International Relations Department
3 rue de la Digue
59000 Lille – FRANCE
Fax: +33.320.574.855 / Email: p.ameye@ieseg.fr
(if necessary, we will accept faxes or emails in the first instance, but originals must be mailed as well)

Approval Process: Once the application is approved by the academic advisor, we send the original acceptance letter to the partner institution. We send a copy by e-mail to the student and the university, as well as IESEG Passport (guide for international students&) and our housing offer.
We do not send the information package to students. We send them a program of the orientation week prior to the beginning of the semester.

Lille - Paris

ACADEMIC INFORMATION

Academic Levels offered: **Undergraduate and Graduate**

Language of Instruction: Undergraduate: English and French
Graduate: English
More than 200 courses taught in English are available.
Working level of the language in which selected courses are taught is requested. No official test is required for partner universities' students (French or English).

List of courses: A «**list of courses available for exchange students**» is downloadable on our website <http://international.ieseeg.fr> under «International > Study @ IESEG in exchange».

With this list, check «**International > Course Catalogue**» on our website for course descriptions (online catalogue) and read the explanation of the ECTS course code for a better course research. <http://international.ieseeg.fr/international/course-catalogue/>

You will then be directed on **Université Catholique de Lille general course catalogue**.
For each of your researches, do not modify the following options: Keywords: nothing ; School or Faculty: IESEG ; Domain: All ; Academic year: 2012-2013.

Language of instruction: Choose courses according to the language in which they are taught: Chinese, English, French, German, Italian, Spanish or All. Most courses taught in other languages than French and English are language courses.
Term: Choose S1 for Fall semester (August – December) and S2 for Spring semester (January – May)

Bachelor courses: Enter the following options: Level: the 2nd “bachelor” option ; Year of study: 1 for 1st year, 2 for 2nd year, 3 for 3rd year of our bachelor programme (our BBA is in 3 years). Our BBA has a track in English and a bilingual track, **so the BBA can be followed fully in English.**

Master courses: Enter the following options: Level: Master; Year of study: All.

Language courses: Enter the following options: Language of instruction: Chinese, English, French, German, Italian, Spanish or All ; Level: TRANSVERSAL

Please contact Pascal Ameye (p.ameye@ieseeg.fr) for further details.

Course Load: In the European Credit Transfer System (ECTS), the normal workload for a full-time student is 30 credits per semester. The number of contact hours varies from the format and the level of the course. Therefore students usually have to attend from 8 to 15 courses per semester to get 30 ECTS. We recommend exchange students to take a minimum of 20 credits per semester. A Learning Agreement (course list) must be established with the home institution.

Course Enrolment: While every effort is made to ensure the accuracy of the information available at the time this catalogue is prepared, the institution reserves the right to makes change at any time without prior notice.

Course registration is done during the mandatory orientation seminar. **All exchange students have access to Bachelor courses (3 years). Bachelor students having completed at least 2 years and Master students have access to Master electives.**

Students will be able to see if there is any course overlap only during the mandatory orientation seminar with timetables available on our Intranet. Our academic advisors help them with their course schedule. Students still have 3 weeks after the orientation week to add and drop courses (Fall 2012: September 14th – Spring 2013: February 1st).

Grading System: Grading scale goes from 0 to 20. **The lowest passing grade for exchange students is 10/20 for Master courses and 08/20 for Bachelor courses.** A note on grades is available on the transcript which is sent to the home university at the end of the student's stay.

French as Foreign Language Courses: French for Beginners, Business French and Advanced Business French courses are offered each semester at no extra cost to our partner universities' students.

Lille - Paris



HOUSING

Housing Offer

IESEG provides different housing options: student and private residence, as well as private housing (private landlords). Students can choose out of those options, and apply right after being contacted by IR with housing offers (by email). It is on a **first-come, first-served** basis. It will be more difficult to find housing on arrival, **so we greatly advise students to book housing as soon as we contact them.**

Leasing contracts are for a one semester period minimum.
(Fall: August 1st till December 31st; Spring: January 2nd till June 30th)

Our International Services Coordinators will support students in this process, so they should not hesitate to contact them for any question about housing or for help.

Housing Insurance

Students are required to subscribe an insurance to cover personal and civil liability.

LILLE

Housing Offer:

On- and Off-campus housing in university and private residences, private housing. Please check our websites for details (residences, costs, hints, vocabulary, etc.):
<http://international.ieseg.fr/international/practical-information/students-housing/>
Contact: housinglille@ieseg.fr

Approximate Cost of Housing: Between EUR 350 and 550 per month, depending on type of housing and duration of stay.

PARIS

Housing Offer:

Off-campus housing in student and private residences, private housing. Please check our websites for details (residences, costs, hints, vocabulary, etc.):
<http://international.ieseg.fr/international/practical-information/students-housing-in-paris/> .
Contact: housingparis@ieseg.fr

Approximate Cost of Housing: Between EUR 400 and 850 per month, depending on type of housing and duration of stay.

Lille - Paris

ADDITIONAL INFORMATION

Visa: **Non-European students must ask for a student long stay visa for studies (D visa), also called VLSTS (visa de long séjour valant titre de séjour) to the French Consulate of their home country.**

For stays less than 6 months, students may get a visa which exempts them from residence permit. In that case, they won't have any administrative formalities to complete upon arrival but the visa may prevent them from travelling abroad during their whole exchange study period and will prevent them from receiving the financial support for accommodation from the French Government. **Students should check with the Embassy what kind of visa they will receive and which possibilities this visa offers.**

Exception: Students coming for less than 90 days (due to academic trimester system in their home university) can ask for a Schengen visa.

Residence title: In case Non-European students have to apply for a residence title in France, we'll help them with the administrative procedure. Cost: fiscal stamp of 58 Euros (once for the whole stay).
In case of extended period of study in France, the residence title will have to be renewed at extra costs.

Health Insurance: European students must ask for the European Health Insurance Card in their country. Quebec citizens must ask for the SE401 Q106. If European and Quebec citizens do not have these documents, they will have to subscribe to the French health insurance.

Non-European students staying more than 3 months are obliged to subscribe to the French health insurance before arrival (around EUR 210), but we also encourage them to have an international insurance, covering them for travels, lost luggage, repatriation and civil liability.

Our staff will provide students with complementary information and wire payment details. Please bring a birth certificate for the registration to the French health insurance.

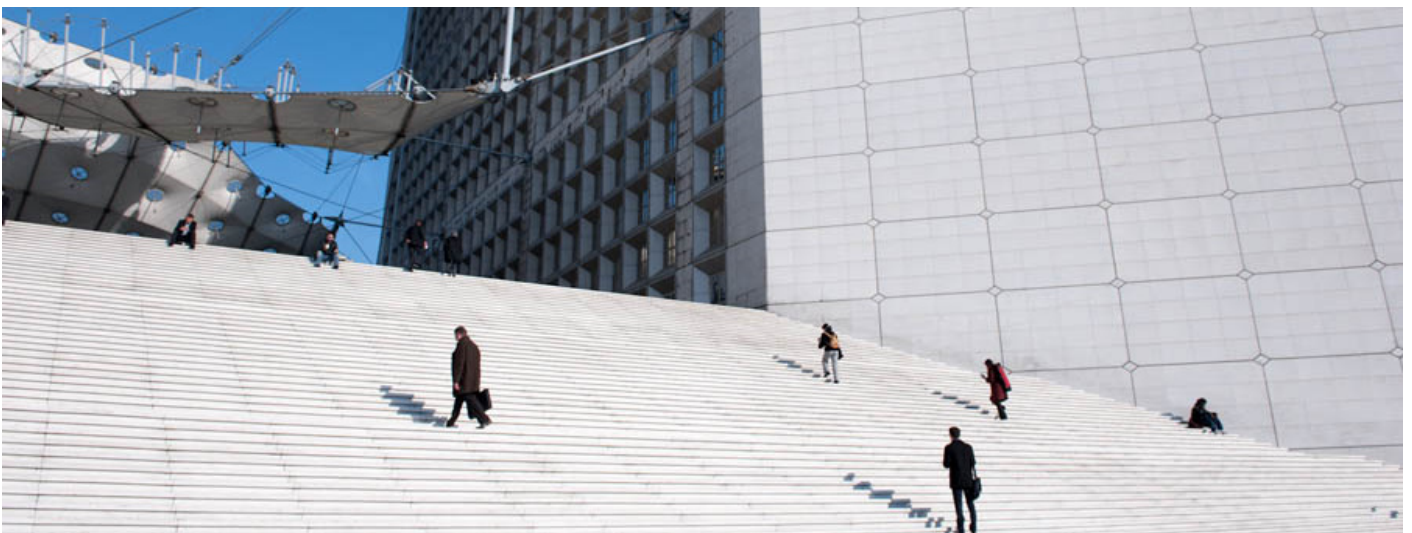
Pick-up Service upon Arrival:

LILLE: Can be arranged by the "International Club" of IESEG. Arrival details in Lille (in (Lille-Flandres or Lille-Europe train stations) to be sent to the following address ASAP: clubinternationallille@ieseg.fr. Available on the Monday preceding the orientation week only.

PARIS: Can be arranged by the "International Club" of IESEG. Arrival details in Paris (in (CDG and Orly airports) to be sent to the following address ASAP: clubinternationalparis@ieseg.fr. Available on the Monday preceding the orientation week only.

International Club IESEG "International Club" is an association of voluntary IESEG students who studied abroad. They organise trips, parties, language café, international diners, buddy, etc. so you will take advantage of your time in France. This association is present on both campuses.

Lille: clubinternationallille@ieseg.fr - Paris: clubinternationalparis@ieseg.fr



Lille - Paris

BUDGET

Cost of living in LILLE: **Between 855 and 1055 Euros (EUR) per month:**

- Accommodation: from 350 to 550 €
- Food: 200 €
- Books and materials: 50 €
- Transport: 80 € (rather leisure)
- Electricity: 45€
- Phone & Internet: 30€
- Personal: 100 €

Don't forget:

French Health insurance for non-Europeans: 210 € for 2012/13 (+ eventual transfer fee)

Residence permit / OFII fiscal stamp: 58 €

Housing deposit (1 month rent) - Housing admission fee

Insurance on accommodation - 55 € per year with SMENO (www.smeno.com) for a studio/T1

TGV to Paris – 20 to 50 € one way

You will get reduced prices with your IESEG student card for the movies, museum, train station, bus pass, etc.

Food: In university residences, breakfast is provided and included in the rent.
IESEG students have access to IESEG cafeteria and to subsidized meals in all university cafeterias throughout France. Students pay on a per-meal basis. A full meal at the cafeteria costs 3€ (www.aeu.asso.fr).

Cost of living in PARIS: **Between EUR 1130 and 1580 per month:**

- Accommodation: from 400 to 850 Euros
- Food: 300 €
- Books and materials: 50 €
- Transport: 150 €
- Electricity: 50€
- Phone & Internet: 30€
- Personal: 150 €

Don't forget:

French Health insurance for non-Europeans: 210 € for 2012/13 (+ eventual transfer fee)

Residence permit / OFII fiscal stamp: 58 €

Housing deposit (1 month rent) - Housing admission fee

Insurance on accommodation - 55 € per year with SMENO (www.smeno.com) for a studio/T1

You will get reduced prices with your IESEG student card for the movies, museum, train station, bus pass, etc.

Food: IESEG students have access to IESEG cafeteria and to subsidized meals in all university cafeterias throughout France. Students pay on a per-meal basis. A full meal at the cafeteria costs 5€. There is a big shopping centre outside the Grande Arche with many fast-foods and restaurants.

For further details, please refer to our IESEG information for exchange students available on:
<http://international.ieseg.fr/international/international-students/>

If you still have some questions, you can contact us at:
- h.guinard@ieseg.fr and c.leducq@ieseg.fr for Lille campus
- h.elkouari@ieseg.fr for Paris campus