



STUDENT ASSOCIATIONS, A UNIQUE OPPORTUNITY TO THRIVE DURING YOUR STUDENT LIFE

- > Getting involved in an association means making the most of the IESEG experience. Associations set the pace of campus life and offer students opportunities to develop their skills, bring projects to fruition, and build strong connections. It's an enriching adventure that leaves a lasting impact on every student's journey.

DISCOVER THE IESEG ASSOCIATION ECOSYSTEM



IESEG
SCHOOL OF MANAGEMENT

EMPOWERING CHANGEMAKERS FOR A BETTER SOCIETY

At IÉSEG, community involvement is much more than just a side activity—it is a unique experience that gives meaning to our journey. Getting involved means putting theory into practice, taking on challenges, launching impactful projects, and sharing memorable moments with other students. Beyond the skills you develop, student associations serve as a real springboard for both personal and professional growth. It's an opportunity to take initiative, collaborate, and make an impact, while contributing to the School's vibrant atmosphere. Joining an association means daring, learning, and building together. So, are you ready to experience it for yourself?

Louis VALLIER

President of the Student Federation IÉSEG 2025-2026

TABLE OF CONTENTS

| | |
|--|----|
| ■ The IÉSEG association network | 03 |
| ■ Organization | 04 |
| ■ Entertainment | 07 |
| ■ Sports | 09 |
| ■ Medias - Communications | 12 |
| ■ Culture - Social issues | 13 |
| ■ Entrepreneurship - Corporate Relations | 16 |
| ■ Social & Environmental Responsibility | 20 |
| ■ Gastronomy | 22 |
| ■ Joining an association | 23 |

THE IÉSEG ASSOCIATION NETWORK

IÉSEG has a network of associations that allows students to experience the best years of their student life. This network is regulated by main associations (the Student Federation, IÉSEG Lille and Paris Student Associations) that manage and coordinate all the association departments within the ecosystem.

The association network at IÉSEG is rich: some associations gather students from Lille and Paris, forming a single inter-campus association, while other associations may be present on both campuses but as distinct teams.

Get ready to join the big IÉSEG student community! With 55 associations to choose from, there's surely a place where you can flourish.

KEY FIGURES



8,450
students



400+
events
every year



2
million euros
budget

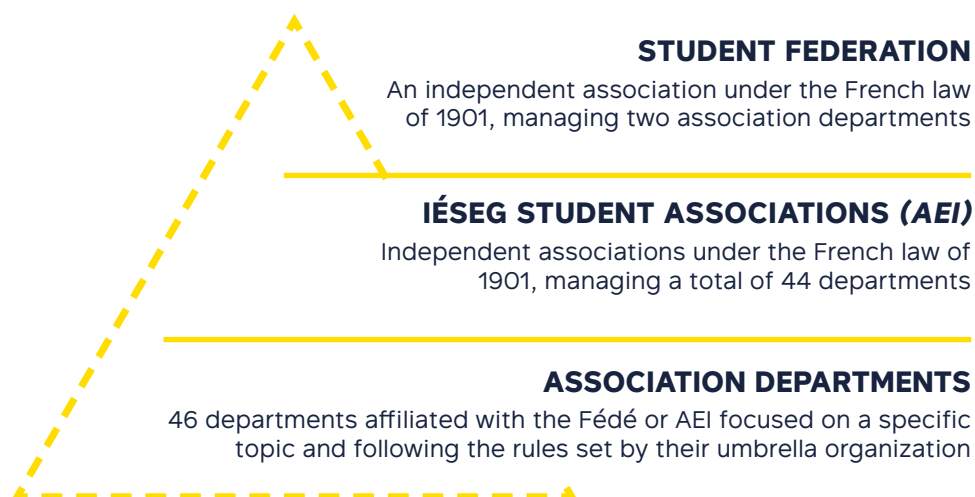


1,240
active
members

SYSTEM ORGANIZATION

The Student Federation is the inter-campus association representing all IÉSEG students. It directly oversees two associations: Teams and SkiSchool. The Fédé is also responsible for allocating association funding between Lille and Paris, in collaboration with the Student Associations (AEI) on each campus: the AEIL for Lille and the AEIP for Paris.

In addition, some associations operate independently, meaning that they are not affiliated with either the Federation or the AEIs. However, they receive subsidies from IÉSEG and must therefore comply with the same rules as other student associations.



Discover the assos
in videos



Scan the QR Code

ORGANIZATION



STUDENT FEDERATION



The **Student Federation** is an inter-campus association that serves as the governing body of IÉSEG's student association network. Its role is to represent and support IÉSEG students throughout their studies. The Fédé oversees inter-campus events and ensures the smooth running of associations. It is also responsible for financial allocations on both campuses, and acts as an intermediary between administrative staff and students.



- > 28 members on the Lille and Paris-La Défense campuses
- > Oversight of student association activities
- > Biggest WEI in France
- > 10 supported and organized inter-campus events

@fede_ieseg

@fedepro.ieseg

ZOOM ON... THE ORGANIZATION OF THE IÉSEG WEEKEND



Alexandre DEL POZO
Daphné BONNET
President and Vice-President
of the Student Federation
2024-2025

Every September, the Student Federation, with the support of the Bureaux Des Étudiants (BDE), organizes the IÉSEG Weekend (WEI). This key event marks the beginning of student life and allows newcomers to make their first connections.

Our mission: to offer an unforgettable experience while ensuring everyone's safety. Initially involved in the Bureaux Des Étudiants (BDE), we joined the WEI Head Office before taking on responsibility for it after our election to the Student Federation.

The 2024 edition was a great success, bringing together 1,800 students, despite intense work in the run-up to the event. Our commitment to sustainability was also recognized when WEI was audited and awarded the Eco Fest label, which recognizes eco-responsible initiatives. We were thus named the most CSR-friendly event of 2024.





IÉSEG STUDENT ASSOCIATIONS



AEIL (IÉSEG Lille Student Association) and AEIP (IÉSEG Paris Student Association) are the cornerstones of community life on each campus.

They liaise between the associations and the School, ensuring that resources are properly distributed among the associations on each campus. They also plan association projects throughout the year.



- > 40 members - 20 on the Lille campus and 20 on the Paris-La Défense campus
- > Organizing, monitoring and managing associations life on each campus
- > Welcome Day, the training seminar for association members



@equipe_aeil



@aeiparis

They enable associations to focus fully on their projects by handling of the administrative and legal aspects (invoices, insurance, banks, etc.). They centralize information from all associations to organize everything as efficiently as possible: calendar, resources, equipment, etc.

Being a member of an AEI means being in touch with everyone at all times. AEIs ensure that all the rules are respected and that everything runs smoothly for members and students alike.

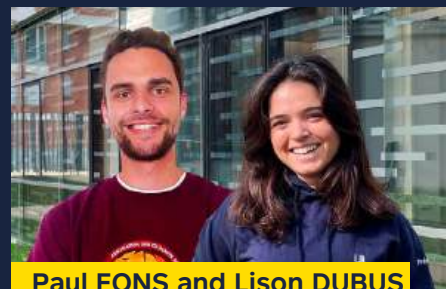
In total, the AEIs oversee over 200 events each, with a budget of €500,000 per campus throughout the year.

“

The IÉSEG community life is based on a system designed for students. Joining one of our associations means becoming part of a dynamic network of passionate students committed to organizing innovative, high-quality events. Each association offers unique projects, giving everyone the opportunity to pursue their passions while taking on important responsibilities.

After actively contributing to various associations during our first years, we had the opportunity to oversee the entire association system on both campuses. As presidents of the IÉSEG Student Association, we've had the chance to contribute to the organization of hundreds of events, making a major impact on student life and bringing together thousands of students every year.

Getting involved in associations offers an unparalleled human and professional experience. It not only allows you to quickly integrate into the student community, but also to take on responsibilities and develop essential skills for the future. It is a human adventure, full of connections and challenges, which is a real springboard for growth and for your future professional life. Joining an association means living unforgettable experiences and creating memories for life.



Paul FONS and Lison DUBUS
President of IÉSEG's Student
Associations 2024-2025

”



INTERNATIONAL CLUB



The International Club (CI) welcomes international students while supporting French students in their academic exchange projects. It focuses mainly on integration, culture and diversity, to enable international students to flourish in France.

The aim is to ensure a memorable experience for international students, with a semester packed with social interaction!



- > 47 members - 26 on the Lille campus and 21 on the Paris-La Défense campus
- > Event support and organization for international students.
- > Organization of trips (Bordeaux, Mont Saint-Michel, Amsterdam), visit to Versailles...



@internationalclublille



@ieseg_ic



Camille RAGU

President of the Paris
International Club 2024-2025



Being part of the International Club is both an enriching and unforgettable experience! We are committed to making international students feel welcomed. We organize various events to help them discover student life in Paris and create unique moments of sharing between French and international students. Thanks to this association, I've had the chance to meet people from all over the world, discover new cultures, and forge real bonds with international students!



IÉSEG AMBASSADORS

IÉSEG Ambassadors plays a key role in promoting the School by recruiting students to represent IÉSEG at events. Each year, the association co-organizes 6 Open Days (3 on each campus, with around 1,000 visitors on each site), 6 High School Immersion Days, and 2 *post-bac* Evenings. Through these initiatives, the organization supports high school students in making their career choices by offering them an authentic immersion in student life at IÉSEG.



- > 32 members - 15 on the Lille campus and 17 on the Paris-La Défense campus
- > Coordinates School's promotion among future students



@ambassadeurslille



@ambassadeursparis



ISAVE

ISAVE brings a new dimension to the student association network by placing safety and awareness at the heart of student life. Its mission is to train and inform students in first aid while enhancing the safety of events organized by other associations. Thanks to effective coordination with professional first-aid providers, ISAVE ensures rapid and appropriate intervention during student events.



- > 16 members on the Lille campus
- > Safety and risk prevention
- > Training, awareness events



@isave_ieseg

ANIMATION



BUREAU DES ÉTUDIANTS



The **Bureau des Étudiants (BDE)** is present on both campuses, and is responsible for welcoming students and supporting their well-being. It encourages interaction between students to keep the IÉSEG spirit alive. The BDE is committed not only to organizing festive events that bring students together and liven up the campuses, but also to supporting students' academic and professional development. Thanks to close partnerships with trusted companies, the BDE offers unique opportunities such as conferences, internships and company presentations.



- > 65 members - 35 on the Lille campus and 30 on the Paris-La Défense campus
- > Promoting the School's student life
- > **Key figures for 2024-2025** : 6,000 participants per year on each campus, with strong physical and digital presence with numerous partners



@lesstarliners



@leslockupslicers



Throughout my time at IÉSEG, getting involved in student associations has been a real asset, both for my studies and my professional development. After a term with the Junior Enterprise and two experiences with the Bureau des Étudiants (BDE), I've had the opportunity to become president of the BDE this year. Between campaigns, the WEI (welcome week for new students) and my term as president, I had the opportunity to manage a team of 40 members, coordinate large-scale events, and strengthen ties between students.



Marin DELMAS

President of the Lille Bureau des Étudiants 2024-2025

Whether for major events or more intimate gatherings, our goal has always been to welcome a diverse range of people and make the association accessible to everyone.

This experience has allowed me to take on significant responsibilities, turn ideas into concrete actions, and always remain attentive to the needs of students.





BUREAU DES JEUX



Dive into the playful world of the **Bureau des Jeux (BDJ)**! This dynamic association awakens the gamer in you, whether you're an aficionado or an enthusiast.

From board games to gaming themed evenings, the BDJ offers a variety of activities to suit all tastes. From Mario Kart tournaments, poker nights and mini-game Olympics, the BDJ promises unforgettable moments all year round.



- > 38 members - 21 on the Lille campus and 17 on the Paris-La Défense campus
- > Bringing students together to play games
- > Chess tournaments, bowling evenings, gaming competitions...

 @bdjieseg

 @bureaudesjeux



IÉSEG E-SPORT

L'IÉSEG E-Sport brings a new dimension to student life by putting competition and passion for gaming at the heart of its commitment. It brings together a community of enthusiasts, supports them in their progress, and helps promote IÉSEG on the French student e-sports scene. Through organizing and participating in inter-school tournaments, the association offers an immersive experience for players of FPS, strategy games, and other competitive titles.



- > 20 members - 10 on the Lille campus and 10 on the Paris-La Défense campus
- > Bringing together e-sports enthusiasts
- > Charity streams, inter-school competitions...

 @iesegesport



SKI CLUB

The Ski Club is a dynamic community bringing together more than 500 participants from both campuses for the traditional Ski School! This flagship event has a budget of €392,000. Imagine a week of skiing in the Alps, competitions, wild parties, and surprises around every corner! But that's not all: the Ski Club also offers lively après-ski activities, workshops, and even a raclette night.



- > 26 members on the Lille and Paris-La Défense campuses
- > Combining fun and skiing

 @skiclub.ieseg

SPORTS



BUREAU DES SPORTS



Dive into the world of sports by joining the **Bureau des Sports (BDS)** — an association present on both campuses offering a multitude of opportunities for sports enthusiasts. Whether you're looking to join a sports team, take part in championships or simply have fun during sports afternoons, the BDS offers over twenty disciplines. With regular training sessions and lively sports meetings, the BDS is here to help you stay in shape and develop your sporting talents, whether solo or as part of a team. Join this passionate community of sports enthusiasts with a friendly atmosphere, both on the court and at regular festive events.



- > 67 members - 36 on the Lille campus and 31 on the Paris-La Défense campus
- > Promoting and making sports accessible at IÉSEG
- > 566 licensees on both campuses
- > Organization of training sessions and sporting events (Sports Weekend)



@rosasporta



@bds.snowfowl



Samy CHOUAHNIA
President of the Paris
Bureau des Sports 2024-2025



I've always been passionate about sports, and I had the opportunity to work alongside an exceptional team of 34 members. From the outset, I was drawn to this association, and this intense experience provided me with memorable moments, real responsibilities, and a genuine opportunity for personal and professional growth.

One of the highlights will always be the WIUC: representing IÉSEG internationally with the whole team was an unforgettable experience, combining ambition, team spirit, and a passion for sports.

Thanks to the Bureau des Sports, I am now confident that I want to build my career in the world of sports, and I have grown immensely through this exceptional adventure.





IÉSEG' LISSE

Craving fresh air, waves, and good vibes? **IÉSEG'lisse** takes you on an adventure into the world of board sports, with a special focus on surfing, in the wild and sunny landscapes of the Landes region. Surfing, skateboarding, wakeboarding... whether you're a beginner or an experienced rider, there's something for everyone.



- > 26 members on the Lille campus
- > Surf and skateboard events...
- > Organization of a week dedicated to surfing



@ieseglisse

More than an association, IÉSEG'lisse is a state of mind: sharing, freedom, and respect for the ocean. Committed to the planet, the association regularly organizes beach cleanups and raises awareness among its members about marine conservation. Because riding also means taking care of your playground. What's on the program? Surfing sessions, a chill vibe *Brice de Nice* style, and above all, the legendary SurfWeek: a week with friends, punctuated by waves, good vibes, and eco-friendly activities.



IÉSEG OUTDOOR / X'TREM



Enjoy adventure with **IÉSEG Outdoor** and **X'TREM**, two associations that invite you to experience thrills and spills. Push back your limits with a variety of extreme sports such as go-karting, paintball, parachute jumping or trails. There are so many activities for adrenaline seekers. Their mantra is to make these sports — often seen as expensive or intimidating — accessible in a safe environment.



- > 35 members - 20 on the Lille campus and 15 on the Paris-La Défense campus
- > Giving students the chance to try out unconventional sports activities



@ieseg_outdoor



@xtrem_ieseg



IÉSEG VOILE - LA NAVY



Come aboard with **IÉSEG Voile** and **La Navy** for an unforgettable maritime adventure! They bring together sailing enthusiasts around sailing-related activities and events. Whether you're a beginner or an experienced sailor, you can discover water sports such as catamaran sailing and windsurfing. Their goal is to take part in the EDHEC Boat Race, where over 3,000 students compete in a variety of sailing disciplines. Join a close-knit team of sailors ready to give you an extraordinary experience.



- > 45 members - 25 on the Lille campus and 20 on the Paris-La Défense campus
- > Introducing students to sailing
- > Sailing workshops, EDHEC race boat, boating license, sand yachting afternoon...



@ieseg_voile



@navy__paris



LE VIRAGE - LE KOP



Show your IÉSEG spirit by joining the **Virage** and **KOP** supporters' associations! Their mission? To reinforce the School's identity through passionate singing and moments of fellowship. But that's not all: these passionate supporters are also there to support the sports and arts teams at inter-school events, to help them reach the top. They invite you to experience unforgettable moments in the grandstands, with boundless energy and festive events where competition meets camaraderie.



- > 44 members - 30 on the Lille campus and 14 on the Paris-La Défense campus
- > Supporting sports teams in sports competitions
- > World Champions for the Supporters' Trophy at WIUC 2022 and 2024



@levirage_ieseg



@kop.asso



PARIS PÉTANQUE CLUB

Discover the **Paris Pétanque Club (PPC)**! Their mission? To help you spend an unforgettable year, forgetting the dreariness of Paris and embarking on the sunny side of Marseille. With a dedicated team and original events, the PPC promises conviviality around pétanque and the culture of Marseille, with festive afterworks, barbecues and even a dedicated evening.



- > 16 members on the Paris-La Défense campus
- > IÉSEG Petanque Association



@boulideallemand.ppc



TEAMS IÉSEG

TEAMS is an inter-school sports competition that brings together students from Paris and Lille for an exciting day! With 6 sports represented, this competition offers fun challenges for athletes and a vibrant atmosphere for supporters. Join TEAMS for a unique sports and social experience, where you can compete against new teams, feel intense emotions and meet new people during an unforgettable day!



- > 31 members on the Lille and Paris-La Défense campuses
- > 1,200 participants from 11 different campuses



@teams_ieseg



After more than a year of preparation, TEAMS is growing. Today, we are more than 30 members working to bring this project to life, which is gradually becoming a must-attend event for schools. This year, a memorable evening gathering 11 schools and 6 different sports was organized in Paris-Saclay and La Palmyre. IÉSEG and our association shone thanks to a dozen sponsors and the energy of all the schools present. So mark your calendars for October 11, 2025, for an even more ambitious 4th edition!



Lisa COUDERT
President of Teams
2024-2025



MEDIA - COMMUNICATIONS



— IÉSEG RADIO LILLE —

Join the exciting world of radio with **IÉSEG Radio Lille (IRL)**! The program features dynamic shows designed by and for students. Listen to regular live broadcasts offering a variety of segments on topics ranging from current events to culture, ecology, and entrepreneurship. You can also enjoy DJ sets, live performances, and lively debates on the airwaves. Enjoy a variety of programs in different formats: live, podcast, or video, where students discuss social issues and the challenges they face.



- > 25 members on the Lille campus
- > Promote themes through participative broadcasts
- > Live broadcasts, playlists and podcasts



@iesegradiolille



— IÉSEG STUDIO —

Discover the captivating world of cinema with **IÉSEG Studio**, the Paris campus cinema association! Throughout the year, immerse yourself in a multitude of events celebrating the seventh art in all its forms. From themed evenings to cinema outings, let yourself be carried away by the magic of the silver screen. But that's not all : take an active part in the making of our short films. Whether you're passionate about scriptwriting, directing or acting, you'll have the opportunity to contribute to our creations.



- > 16 members on the Paris-La Défense campus
- > Promoting film culture



@iesegstudio



— REC - PIB —

REC and **PIB** are IÉSEG's multimedia associations! Their mission? To capture all the unforgettable moments of association events. Thanks to their passionate members, you will have access to photos and videos to capture the best moments of your student years. They will also offer you lasting memories with newspapers and aftermovies. With their boundless creativity, these associations promise a memorable year filled with emotions and unforgettable memories!



- > 53 members - 28 on the Lille campus and 25 on the Paris-La Défense campus
- > Capturing the best moments of the year and offering memories
- > 270 photo albums per semester and the photo group includes 5,100 members



@prison.brec



@pib.catchmeyecam



CULTURE - SOCIAL ISSUES



ACAP

ACAP, the association of rap culture enthusiasts on the Paris campus, organizes a variety of exciting events such as open mics, Rap Contenders and conferences, showcasing the talents of local rappers and beatmakers. With a dynamic team, it fuses the love of urban culture with the discovery of new horizons. A variety of fields, from street art to rap, including music creation and a passion for sneakers, offers a rich and immersive experience in the urban realm.



- > 11 members on the Paris-La Défense campus
- > Promoting urban culture and making it accessible
- > Open-mic, Rap Contenders...



@acap_aradise



BUREAU DES ARTS



The Bureau des Arts (BDA) offer an in-depth exploration of artistic diversity through workshops, themed evenings and concerts. From film and music to dance, fashion and visual arts, students are immersed in a world of creative expression. They also organize inter-school events, such as the Trophée des Arts in Spain. Joining the BDA is the promise of a memorable artistic adventure, and the showcasing of creativity through a wide range of artistic activities.



- > 53 members - 27 on the Lille campus and 25 on the Paris-La Défense campus
- > Promoting art among students through artistic hubs
- > *Nuit des Talents*, *Intimates*, *DJ Sets*, *Trophée des Arts (TDA)*, *Boiler*, *Festival*...



@les_blizzarts



@lesridenart



Martin-Lou LETAINTURIER
President of the Paris
Bureau des Arts 2024-2025



Serving on the Bureau des Arts has been a deeply rewarding human and artistic adventure. More than just a coordinating role, it was an opportunity to bring art to life on campus. I had the chance to bring together a variety of talents, organize ambitious cultural projects, and host events that highlighted the richness and diversity of student art. This experience allowed me to develop concrete skills in management, communication, and team leadership, while reaffirming my belief that art is a powerful vehicle for connection and collective engagement.





COMED'IESEG

COMED'IESEG, the performing arts association on the Lille campus, offers students the opportunity to express and share their passion for drama, stand-up, improvisation and acting. COMED proposes two major projects each year: a play and a musical, both winners of the prestigious IÉSEG Award for «Best Association Project».



- > 30 members on the Lille campus
- > Performing arts association
- > 1 musical with 25 actors, dancers and singers in front of 1,000 spectators



@comedieseg

Joining COMED means immersing yourself in an artistic family where you can take part in café-theater evenings, murder parties, and many other exciting events — whether by organizing these incredible activities or performing on stage!



Passionate about theater, I joined COMED'IESEG in my first year, never imagining how much this association would shape my student life. Between classical theater, improvisation, musicals, and a team of 35 members, I have experienced unforgettable moments.

This year, COMED'IESEG was voted Association of the Year and won the Event of the Year award. It's a huge source of collective pride!

With my team, we organized a variety of events: stand-up comedy, Incroyable Talent, a classical play, and the musical Requiem. This show brought together more than 1,000 spectators at the Théâtre Sébastopol and was performed by 25 passionate students.

This human adventure has given me valuable skills in management, organization, and teamwork. Above all, it has proven to me that with desire, rigor, and creativity, great things can be achieved.



Adam TUCKER
President of COMED
2024-2025



L'Atelier, the fashion association, brings together a passionate team whose mission is to promote fashion among students and give them easier access to this field. Through a variety of events, such as afterworks, workshops and fashion shows featuring young independent designers, the association offers a platform to explore fashion trends and craftsmanship. Since 2017, l'Atelier has brought together a community of fashion artisans who collaborate with various partners to illuminate the fashion landscape within the School.



LACAPSULE

LA CAPSULE

La Capsule is a cultural association run by a team of students who are curious and passionate about extraordinary life stories. Through the organization of conferences, it invites speakers with exceptional, sometimes moving, and always inspiring backgrounds. A true space for discovery and openness, La Capsule also offers a variety of cultural events to fuel reflection and raise awareness. Each meeting is designed as an opportunity to grow, question one's view of the world, and enrich oneself as a human being.



LA TRIBUNE



La Tribune is IÉSEG's debate, public speaking, and politics association. Its members enjoy discussing their ideas on social issues. Being part of La Tribune means organizing and hosting conferences with influential figures, as well as public speaking contests and debates. As a member of the French Debating Federation, it participates in debating competitions against other prestigious French universities and *grandes écoles*.





TEDxIÉSEGPARI

TEDxIÉSEGParis is the local branch of the TED conferences, offering varied and captivating talks by inspiring inspirational speakers. The association aims to challenge perceptions and share innovative ideas, while at the same time offering students a platform to present their own talks via the Tremplin Talk. With its commitment to offering a remarkable experience at its annual conference, it challenges perceptions and enriches minds. Lately, the association held its annual conference at the Grand Rex, attracting over 100 participants.



- > 16 members on the Paris-La Défense campus
- > Sharing concepts that bring an inspiring view of the world

 @tedxiesegparis



TRAVEL CLUB

The Travel Club opens the doors to a world of adventure and discovery. In search of new cultures, it takes you on a journey through a variety of events, both in Paris and abroad. From themed afterworks to European tours, each experience is designed to thrill. With mystery destinations and already memorable getaways in Amsterdam or Milan, the excitement is on to discover where our next adventure will take us! Join us for an exciting travel experience!



- > 15 members on the Paris-La Défense campus
- > Travel and discovery association

 @travelclubieseg

ENTREPRENEURSHIP - CORPORATE RELATIONS



GÉNIUS IÉSEG

Genius IÉSEG is the entrepreneurship association on the Paris campus, and a member of Genius Global, the largest network of student entrepreneurship associations in France. Meet inspiring entrepreneurs at dynamic conferences and afterworks.



- > 11 members on the Paris-La Défense campus
- > Raise awareness and introduce students to the world of start-ups

 @geniusiesegparis

Joining Genius means diving into a world of opportunities: hackathons, business games and much more. But what makes Genius unique is its close collaboration with partner schools, offering an enriching and stimulating entrepreneurial experience. If you have a thirst for entrepreneurship, join us to explore a world where ideas turn into action!

IÉSEG CONSEIL is much more than a student association. Based on the Lille and Paris-La Défense campuses, this Junior Enterprise specializing in economics consulting offers a wide range of services, including marketing, CSR, finance and human resources, tailored to both large companies and start-ups. Joining IÉSEG CONSEIL is an opportunity to work on real paid assignments, take on concrete challenges for clients, and put your academic skills into practice. But that's not all! Being a member of IÉSEG CONSEIL also means joining France's leading student movement, with more than 200 Junior Enterprises.

IÉSEG CONSEIL Lille and Paris are ranked among the top 30 and top 6 Junior Enterprises in France, respectively. Are you looking for a unique, stimulating, and professional experience in an ambitious and committed team? Whatever your level of education or aspirations, IÉSEG CONSEIL is the ideal association to take your first steps into the professional world—while enjoying an exceptional human adventure.



- > 50 members - 25 on the Lille campus and 25 on the Paris-La Défense campus
- > A combined revenue of €600,000
- > Consulting services through student missions, conferences and professional events on campus, organization of student competitions

> In partnership with:



@iesegconseil



IÉSEG CONSEIL Lille



@iesegconseil.paris



IÉSEG CONSEIL Paris



Arthur DETIENNE
Communications Project
Manager for IÉSEG CONSEIL Lille
and Founder of ADT Visuals



From my first year at IÉSEG, I joined IÉSEG CONSEIL Lille with one idea in mind: to find a professional association that would allow me to quickly collaborate with companies and professionals. By joining the communications department, I immediately had the opportunity to work on concrete projects: creating advertising for the association, launching podcasts, sales prospecting, etc. Very quickly, I was able to experiment, propose and test ideas—all in a supportive environment, without taking any risks. This freedom of initiative was a real catalyst.

Much more than a formative experience, this immersion was the springboard for my entrepreneurial adventure. Thanks to the skills I acquired and the confidence I developed, I was able to start my own company, which now helps businesses create high-end audiovisual content and distinctive branding strategies.





HOW I MET YOUR START-UP

How I Met Your Start-Up (HIMYSU)

combines entrepreneurship and eloquence to help you develop your public speaking skills. Their events, from immersions to afterworks, offer unique networking opportunities with start-ups and renowned companies.



- > 19 members on the Lille campus
- > Create a unique bond between start-ups, companies and students



@himysu_ieseg

The highlight of their year is their flagship event, which attracts over 700 participants and pits six shortlisted students against each other. These shortlisted students are challenged to present their start-up in an original and convincing way to a panel of professionals. With prizes of up to €1,500, it's a chance to stand out from the crowd and create lasting memories.



IÉSEG FINANCE



IÉSEG Finance aims to make finance more accessible to students, while supporting them in building their career path, whether in corporate finance or market finance. To this end, it organizes a variety of events, including conferences on a range of topics (mergers and acquisitions, private equity, sales and trading, etc.), visits to investment banks, competitions, and simulations (M&A, trading, market finance). The association also publishes reports for students and professionals on financial news, M&A transactions, major IPOs, as well as investment analysis and stock research. By offering events and content tailored to all levels of expertise, IÉSEG Finance encourages learning, exchange, career guidance, and provides unique networking opportunities, particularly during networking evenings.



- > 43 members - 19 on the Lille campus and 24 on the Paris-La Défense campus
- > Introducing students to the world of finance
- > Trading competitions, AMF certification, dedicated conferences...
- > In partnership with:



@iesegfinance

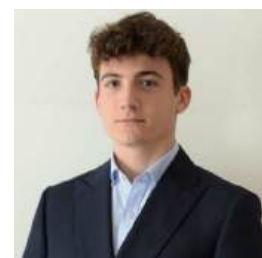


@iesegfinanceparis



My commitment, first as Event Manager and then as President, has allowed me to deepen my knowledge of finance while developing solid skills in project management and leadership. Working on a daily basis with a committed and close-knit team has made me aware of the importance of collective dynamics in the success of our initiatives.

Regular exchanges with industry professionals have enriched my understanding of the finance profession and strengthened my professionalism. These interactions also allow us to give students a more concrete vision of a world that is often perceived as complex. Finally, these encounters have reinforced my interest in finance, while offering me opportunities for collaborative and practical learning.



Alexandre CHANET
President of IÉSEG
Finance Paris
2024-2025





KRYPTOSPHERE IÉSEG

Welcome to the world of **Kryptosphere IÉSEG**, the association dedicated to exploring blockchain technologies, crypto assets, and artificial intelligence. Join a dynamic and passionate team committed to staying at the forefront of innovation. With Kryptosphere, you will immerse yourself in technological advances, explore the opportunities of Web3, and participate in concrete projects that are shaping the future of digital technology.



- > 25 members on the Paris-La Défense campus
- > Promoting blockchain and crypto-assets



@kryptosphere_ieseg



WOMEN IN BUSINESS

Women in Business (WIB), works to create a more inclusive professional environment, focusing on three key missions: promoting the role of women in the workplace, raising awareness of existing inequalities, and highlighting progress towards greater equality. They organize a variety of events every month, including conferences, workshops, and networking dinners.

These events provide IÉSEG students with opportunities to learn, interact with inspiring professionals, and develop essential skills to thrive in a constantly changing professional world.



- > 35 members on the Lille and Paris-La Défense campuses
- > Promoting the role of women in the professional world



@wibieseg



Laureen SULTAN
President of WIB
2024-2025



Three years ago, I joined WIB with the desire to promote gender equality in the professional world and to create a space for women to express themselves, find support, and pursue their ambitions. As an event member, then event manager, and finally president, I learned to recognize each person's strengths and to bring a team together around a common cause. Leading means listening, guiding, and inspiring. I've had the opportunity to organize impactful events, raise awareness among students about the place of women in business, and establish professional partnerships that lead to concrete opportunities.

My greatest source of pride is having helped young women grow in confidence, helping them believe in their worth and dare to pursue their ambitions. Today, I am proud to be part of a movement that is shaping a more inclusive professional world, where every woman can say, "I am here because I earned my place."



SOCIAL & ENVIRONMENTAL RESPONSIBILITY



ACT



Get involved with **ACT**, the association dedicated to environmental protection and social commitment! ACT raises students' awareness of environmental issues and encourages them to adopt responsible behaviors on a daily basis. Through lively conferences and inspiring workshops, ACT takes a close look at today's environmental challenges and explores impactful solutions. But there's more! ACT challenges students to adopt simple but effective actions, demonstrating that every action counts in shaping a sustainable future.



- > 47 members - 26 on the Lille campus and 21 on the Paris-La Défense campus
- > Achieving carbon neutrality at IÉSEG
- > Clean Walk, a community vegetable garden



@act_lille



@paris.act

In addition to its awareness-raising activities, its members organize a variety of events such as garage sales and DIY workshops, all in a friendly, caring atmosphere.



BUREAU DE L'HUMANITAIRE



The **Bureau de l'Humanitaire (BDH)** fights for causes that really matter. The association carries out a multitude of projects to raise student awareness of humanitarian issues. The team organizes conscience-shaking, heart-stopping events, and works locally with Restos du Coeur and the Banque Alimentaire. Its mission is to instill a spirit of mutual aid in students, encouraging them to take part in food distribution, blood donations and clothing drives. Together, we can change the world, one step at a time.



- > 39 members - 22 on the Lille campus and 17 on the Paris-La Défense campus
- > Getting students involved in solidarity and humanitarian causes



@bdhieseg



@bdhparis



DÉFIL'CANCER

Since 2008, Défil' Cancer has been committed to supporting women affected by cancer. It promotes self-confidence and beauty in all its forms. Through a series of workshops organized throughout the year, the models forge valuable bonds and support each other to feel radiant on the day of the fashion show, the highlight of the year for the association. This year, the fashion show took place at the Palais Rameau in Lille, in front of 300 spectators, a celebration of courage and beauty filled with an atmosphere of solidarity and positivity. Join us to make every moment unforgettable, because at Défil' Cancer, every woman is a star that shines with her own light.



- > 22 members on the Lille campus
- > Organizing events with women affected by cancer to highlight their strength
- > Winner of the 2025 Commitment Awards from the Catholic University of Lille



@defilcancerlille



I am very proud to be part of this wonderful adventure that is Défil' Cancer, an adventure that has been with me for three years now. But for me, it's not just a simple association: it's a real life lesson, a human interlude where you learn, listen, and grow. Over the years, I've had the chance to meet people, hear moving stories, and share real, sincere, raw emotions. These stories have marked me, carried me, and changed me.

This experience has enriched me far beyond what I could have imagined—both personally and professionally. I discovered the strength of community, the power of commitment, and above all, the importance of listening. We are a team of 22 students, united by the same desire, the same heart, and the same values. We strive to be more than just a group: we are a small family, close-knit, caring, full of hope and determination.



Lou JANOT
President of
Défil' Cancer
2024-2025



GASTRONOMY



GOURMAND'EASE - LA SAUCE



Dive into culinary adventure with **Gourmand'ease** and **La Sauce**! These associations offer much more than cooking classes. Their aim is to help you discover or rediscover the pleasure of cooking, while raising your awareness of healthy, affordable eating. Join a real family of gourmets and share recipes, restaurant tips and friendly moments at «opens bouffes» throughout the year. Want to join this merry band? So don't delay, come and feast with us!



- > 40 members - 22 on the Lille campus and 18 on the Paris-La Défense campus
- > Making cooking attractive to students
- > Cooking classes, dinner in the dark, *Appart à Graille*



@gourmandeazzz



@lasauce_ieseg



LA DISTILLERIE - IVV



Join the exciting world of **La Distillerie** and **IVV**, the associations that will introduce you to the world of wines, cocktails and beers with style and passion! Join these dedicated teams to become a true oenologist. They offer a captivating experience focused on the qualitative and responsible enjoyment of alcohol. From wine tastings to themed evenings and local bar reviews, they invite you to explore the flavors and intricacies of the art of mixology and zythology. Join them for outstanding moments and exceptional taste discoveries!



- > 44 members - 25 on the Lille campus and 19 on the Paris-La Défense campus
- > Discover the world of oenology
- > Tastings, hands-on workshops, winegrower weekends



@ladistillerie_ieseg



@vincantation_ivv





JOINING AN ASSOCIATION

DISCOVER THE DIFFERENT OPTIONS AVAILABLE TO YOU IF YOU WISH TO JOIN ONE OF THE SCHOOL'S ASSOCIATIONS:

Throughout the year, there are numerous opportunities for students to get involved in student life at IÉSEG. Whether through recruitment drives or student association campaigns, everyone can find an association that suits them and their interests.

1

RECRUITMENT AT THE BEGINNING OF THE YEAR

At the start of the academic year, a forum is organized for students to discover all the associations present on each campus. This is the perfect moment to ask questions, meet active members, and apply to join an association. A second recruitment wave is also organized in January, at the beginning of the second semester.

2

ASSOCIATION CAMPAIGNS

Some IÉSEG associations are renewed not simply through recruitment, but through a system of association campaigns. Each year, six associations are involved: the BDE, BDS, BDA, REC/PIB, AEI, and the Student Federation. The BDE, BDS, BDA, and REC operate through “lists”: teams of students who form in advance — often in the utmost secrecy — to develop an association project. These projects are then unveiled during the Association Campaigns, organized by the AEI. During three intense weeks in April, the “lists” compete to come up with creative events and activities to win over students, who then vote at the end of this period to elect the next one-year term.

The AEI and the Fédé are also renewed each year, but their campaigns are run differently, with their own schedules and voting systems. They are nonetheless just as important in campus life!

3

END-OF-YEAR RECRUITMENT

At the end of the year, the associations' terms come to an end, freeing up many positions. If you haven't had the opportunity yet to get involved, now is the perfect time to join a team, showcase your talents, and actively contribute to campus life.



LILLE:

> 3 rue de la Digue
F-59000 Lille



PARIS:

> Socle de la Grande Arche – 1 Parvis de La Défense
F-92044 Paris – La Défense cedex

> Switchboard: +33 (0)3 20 54 58 92 / +33 (0)1 55 91
10 10

> www.ieseg.com



EMPOWERING CHANGEMAKERS FOR A BETTER SOCIETY